

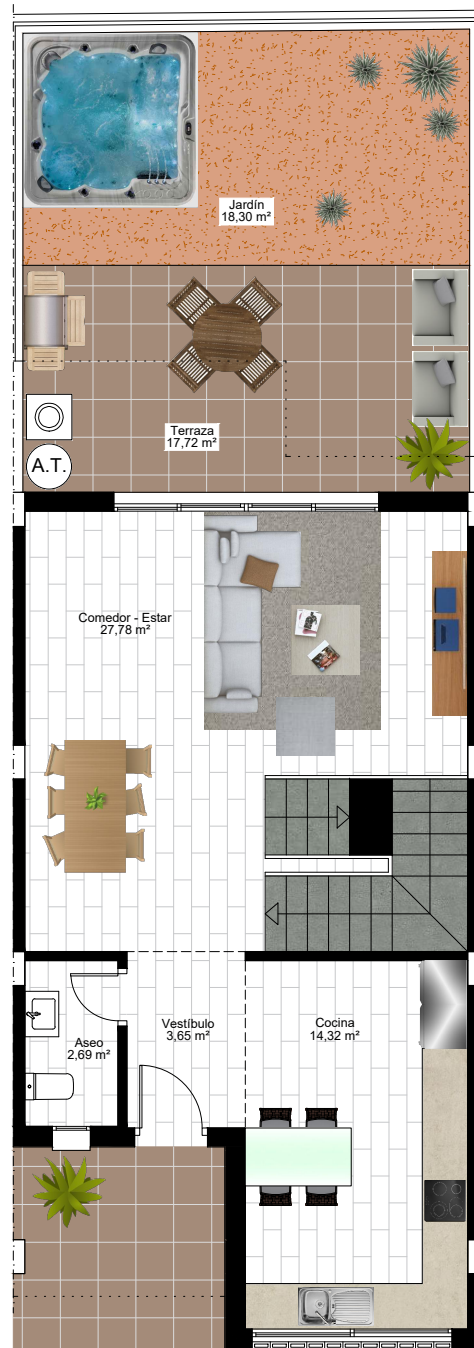
**Sobre Rasante**

Superficie Construida 177,42 m<sup>2</sup>

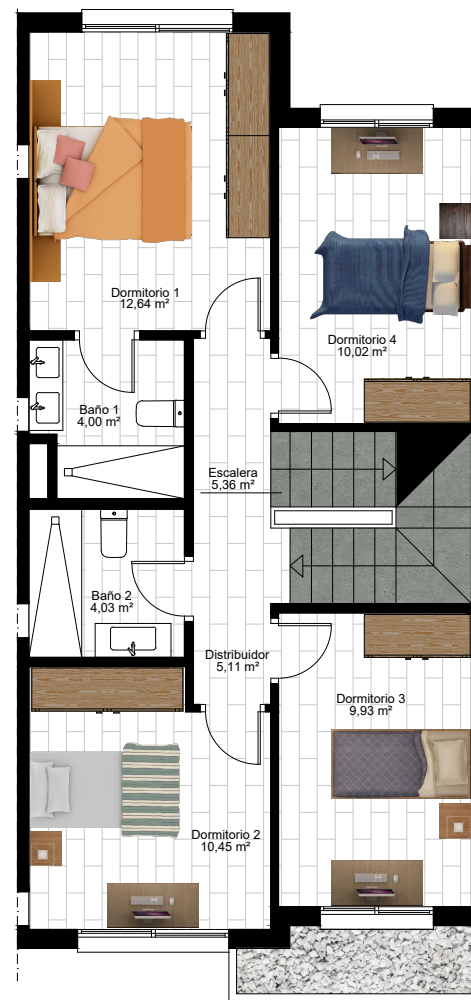
**Bajo Rasante**

Superficie Construida 72,36 m<sup>2</sup>

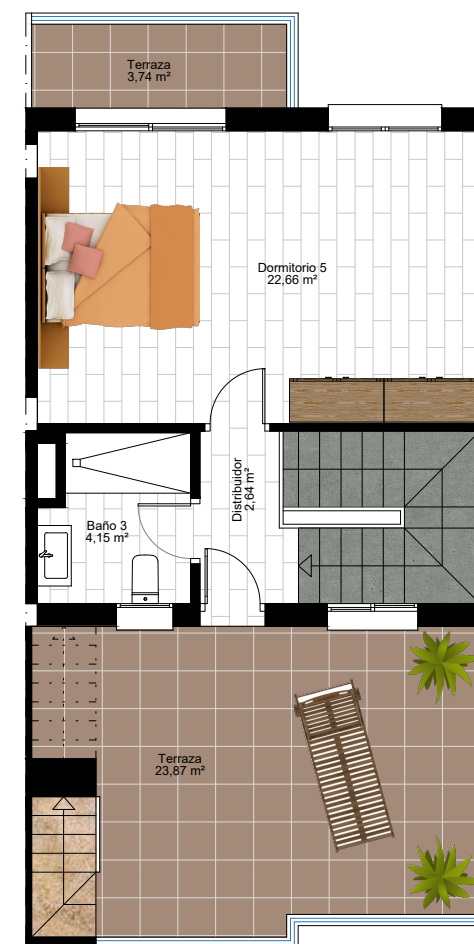
Superficie Parcela 123,64 m<sup>2</sup>



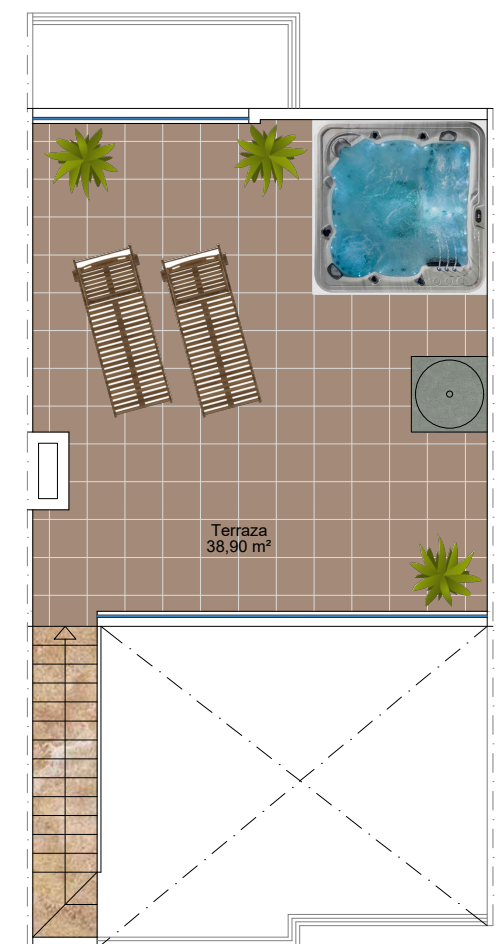
**PLANTA BAJA**



**PLANTA PRIMERA**



**PLANTA SEGUNDA**



**SOLARIUM**



**PLANTA SEMISÓTANO**

